

TBM #7292
 EL=795.85
 R.R. SPIKE SET ON
 UTILITY POLE

STR# 5023
 TC = 791.00
 E INV 12" RCP = 788.75



NE CORNER
 N.E. 1/4
 SECTION 26-19-4
 TBM #7098
 EL=802.35
 HARRISON FOUND

PREPARED BY:
 Department of Engineering
 16 S. 10th Street, STE 155
 Noblesville, IN 46060
 Ph: (317) 776-6330
 Fax: (317) 776-6322
 www.cityofnoblesville.org/engineering



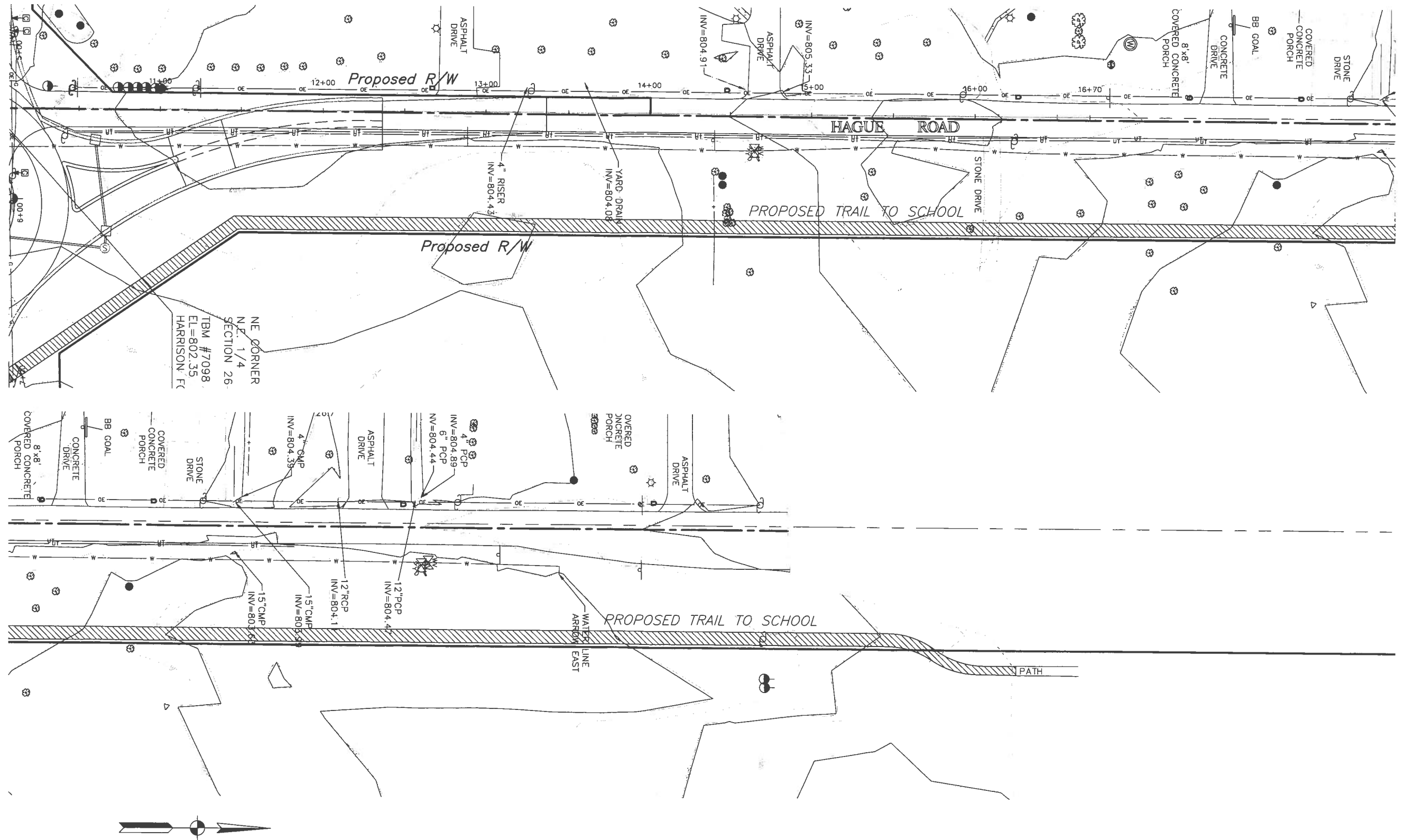
| | | |
|--------------------------|-----------------|------|
| RECOMMENDED FOR APPROVAL | DESIGN ENGINEER | DATE |
| DESIGNED: AJR | DRAWN: AJR | |
| CHECKED: | CHECKED: | |

**CITY OF NOBLESVILLE
 DEPARTMENT OF ENGINEERING**

196th Street & Hague Road
 Preliminary Layout

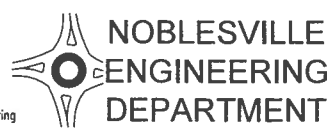
| | |
|------------------------------|------------------|
| HORIZONTAL SCALE 1" = 30' | BRIDGE FILE - |
| VERTICAL SCALE NA | DESIGNATION - |
| SURVEY BOOK - | SHEETS - of - |
| CONTRACT | PROJECT |

File Path: S:\Projects\196th Street\196th Street\196th Street.dwg
 Plot Date: 7/7/2011 10:57 AM



D:\Users\jguy\Documents\Projects\196th & Hague - 191\196th & Hague - 191.dwg
 7/2/2011 10:58 AM
 AutoCAD 2011

PREPARED BY:
 Department of Engineering
 16 S. 10th Street, STE 155
 Noblesville, IN 46060
 Ph: (317) 776-6330
 Fax: (317) 776-6322
 www.cityofnoblesville.org/engineering



| | | |
|--------------------------|-----------------|------|
| RECOMMENDED FOR APPROVAL | DESIGN ENGINEER | DATE |
| DESIGNED: AJR | DRAWN: AJR | |
| CHECKED: | CHECKED: | |

CITY OF NOBLESVILLE
DEPARTMENT OF ENGINEERING

 196th Street & Hague Road
 Preliminary Layout

| | |
|------------------|-------------|
| HORIZONTAL SCALE | BRIDGE FILE |
| 1" = 30' | - |
| VERTICAL SCALE | DESIGNATION |
| NA | - |
| SURVEY BOOK | SHEETS |
| - | - of - |
| CONTRACT | PROJECT |