



May 17, 2017

Facility Inspection Report

Inspection Location:

Indiana Transportation Museum Inc.
701 Cicero Rd.
825 Park Drive
Noblesville, IN 46060

The above facility is operated by the Indiana Transportation Museum Inc., a domestic nonprofit corporation. The facility is located within the larger boundary of Forest Park (City of Noblesville); an inspection was performed on 5/17/2017 to evaluate possible environmental concerns. This is an initial evaluation to determine if reported concerns were valid and not comprehensive in nature, follow up inspections may be necessary to fully document the extent of the environmental impacts.

No building interiors were inspected, only the outside maintenance and storage area of the grounds as indicated on the attached facility map. Comments and observations will be attached to each of the photographs taken during the inspection.

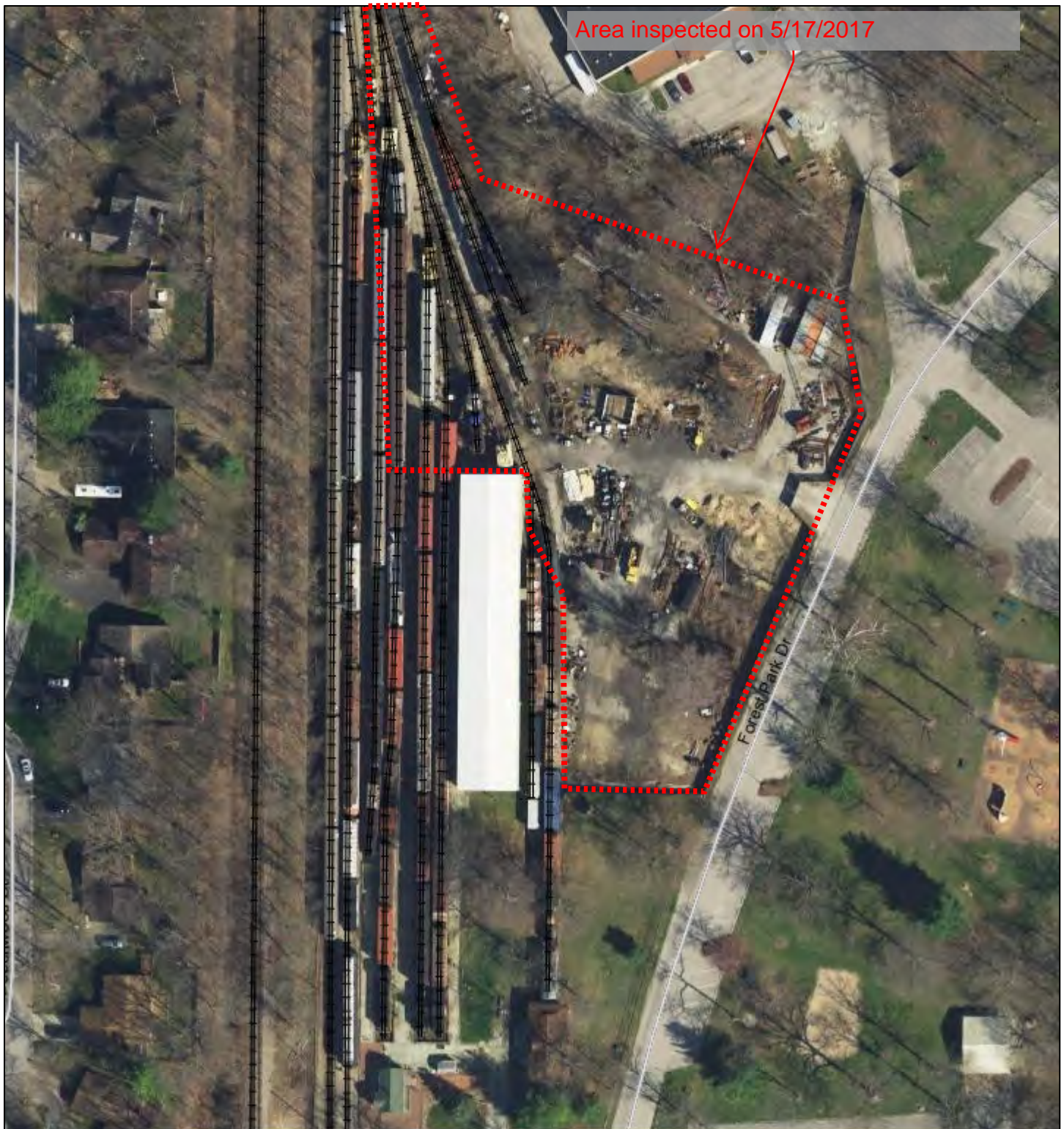
Based on my initial observations and items noted in my attached photographs, I have concluded that this facility has serious issues with outside storage of fluids and other items that pose a significant risk to ground and surface waters. If this were a City operated facility inspected by IDEM, we would be facing serious violations and enforcement action. I am recommending that prompt action be taken to perform a more comprehensive evaluation so that appropriate corrective actions and proper clean up can be documented.

Respectfully,

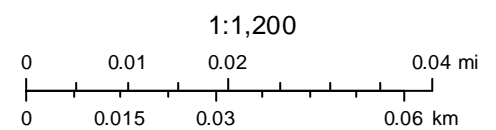
Tim Stottlemeyer

Tim Stottlemeyer
MS4 Program Manager
City of Noblesville

Indiana Transportation Museum



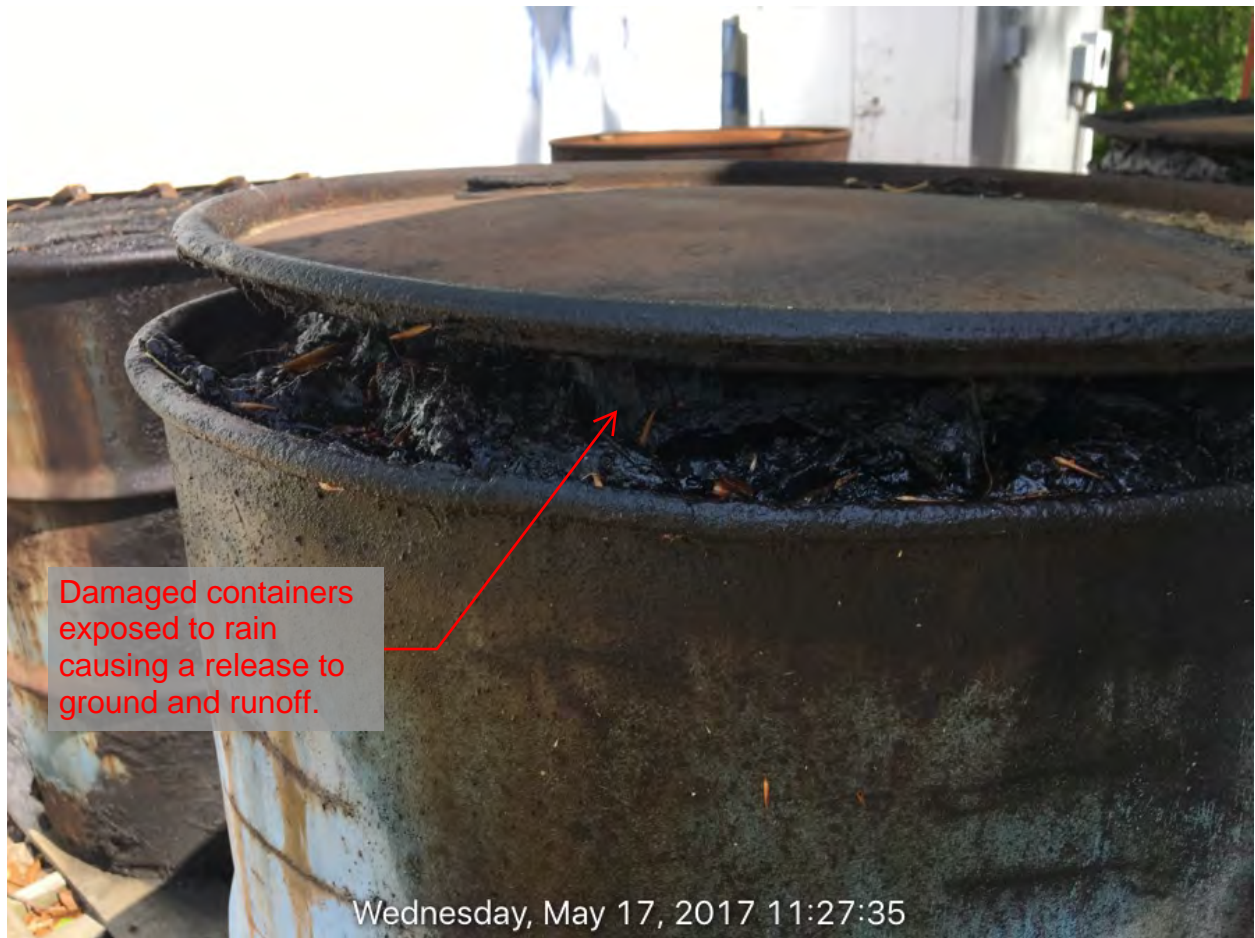
May 17, 2017



Basemap information here







Damaged containers
exposed to rain
causing a release to
ground and runoff.

Wednesday, May 17, 2017 11:27:35

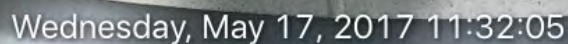


Leaking container.

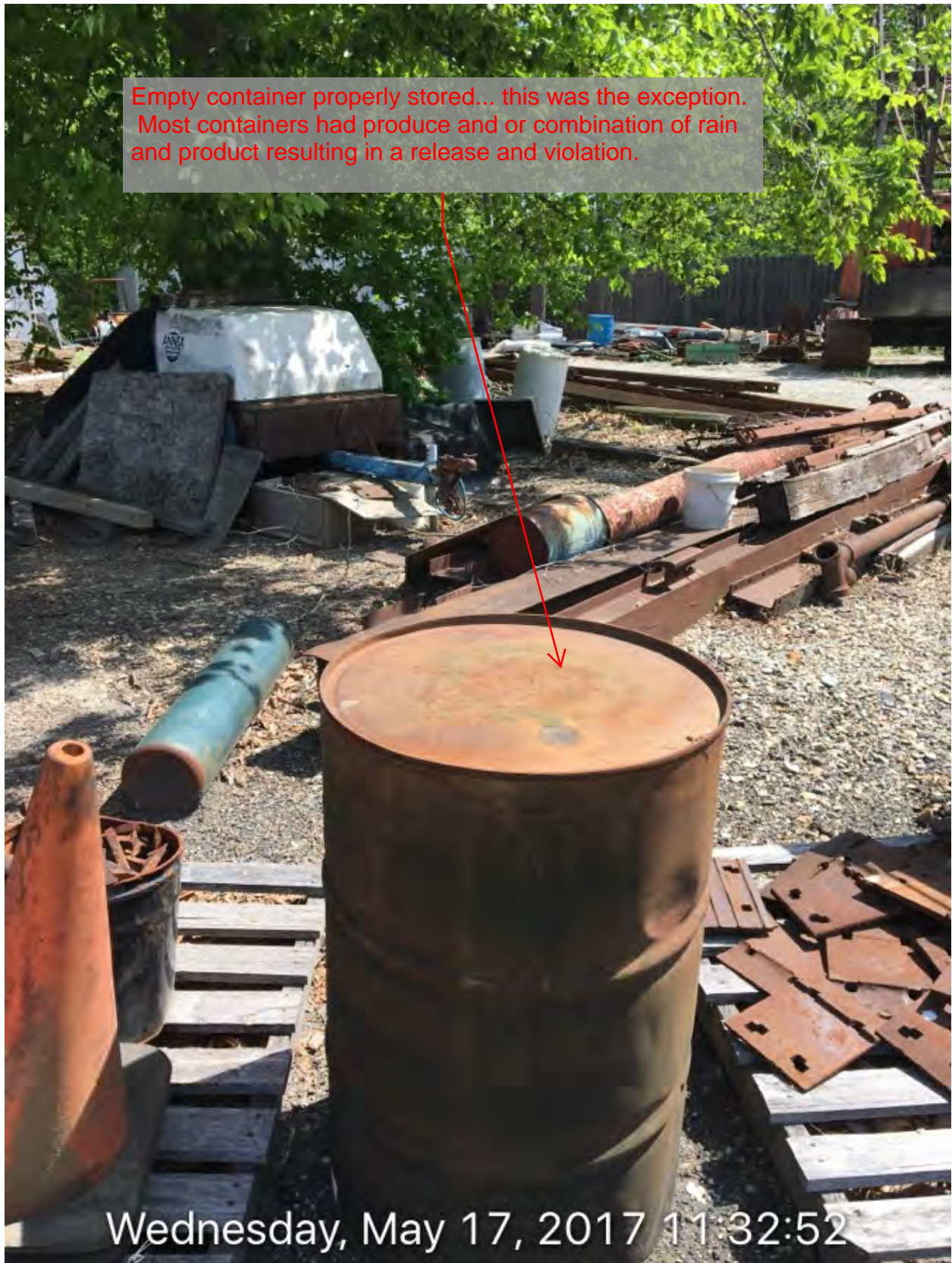
Wednesday, May 17, 2017 11:27:43



Wednesday, May 17, 2017 11:29:00



Empty container properly stored... this was the exception.
Most containers had produce and or combination of rain
and product resulting in a release and violation.



Wednesday, May 17, 2017 11:32:52





Random buckets with mystery fluids exposed to the elements causing a release. Heavy staining.



Wednesday, May 17, 2017 11:35:57



Typical of many containers... partially full
of rain mixed with product.



Wednesday, May 17, 2017 11:38:50


Heavy staining from improper storage and handling. Improperly located directly next to a drainage way.

heavy staining...

No drain plug.

Wednesday, May 17, 2017 11:39:41





Secondary containment has no plug resulting in a release of trapped fuel onto the ground and drainage way.

Wednesday, May 17, 2017 11:39:55

Building roof is collapsing onto unsecured containers currently leaking. This location has several dozen containers of various sizes and unknown substances.



Dozens of smaller containers in this building currently leaking.



Clusters of containers previously and or currently leaking resulting in a release to ground and surface waters.



Wednesday May 17, 2017 11:41:40

partially full of rain and product.



Wednesday, May 17, 2017 11:41:53





Wednesday, May 17, 2017 11:47:26

Attempts at proper storage and protection from the elements are insufficient.



More batteries exposed to the elements.



Wednesday, May 17, 2017 11:52:02



Heavy staining under several pieces of older equipment.



Wednesday, May 17, 2017 11:59:46