

Exhibit 2

H+SP

H+SP

CARSON

LLC

CDA SOUTHWEST

12301 Research Blvd.

Blvd IV - Suite 130

Austin, TX 78759

Tel 512.977.0350 Fax 512.977.0384

H+SP

5113 Southwell Parkway, Ste 100

Austin, Texas 78735

Tel 512.531.9075

www.hspausin.com

CDA MIDWEST

9229 Delegates Row Suite 250

Indianapolis, IN 46062

Tel 317.843.5979 Fax 317.843.5975

www.carsondesign.com

Embre Asset Group Inc.

4747 Williams Drive

Georgetown, TX 78633

(512) 819-4700

signcraft

USA

identifying your way

1301 Antioch Pike • Nashville, TN 37211

P. 615-885-2900 F. 615-885-2989

Promenade Hospital
6139 PROMENADE SHOPS BLVD.
NOBLESVILLE, IN 46062

STAMP:

CDA SOUTHWEST

REGISTERED

NO. AR16000088

STATE OF INDIANA

ARCHITECT

ISSUED:

02.28.17

CONSTRUCTION

REVISIONS

03.28.17	1	PR #001
04.10.17	2	PR #002-FD COMMENTS
08.18.17	3	PR #004

PROJECT NUMBER

A1660704 H+SP 19400002

DRAWING DATE:

02.28.17

DRAWN BY:

PM

Author

DRAWING TITLE:

ARCHITECTURAL SITE PLAN

SHEET NUMBER:

G1.01

Key

- (S000) Recommended
- (S000) Will need a Variance

EMERGENCY

ENTRANCE

PROMENADE HOSPITAL

Westfield Rd.

Promenade Shops Blvd.

East Entrance Rd.

St. Vincent NEIGHBORHOOD HOSPITAL

01 ARCHITECTURAL SITE PLAN - FOR REFERENCE ONLY
1/16" = 1'-0"

Graphic Scale: 1 inch = 16 feet

0 16' 32' 48' 64'

NORTH

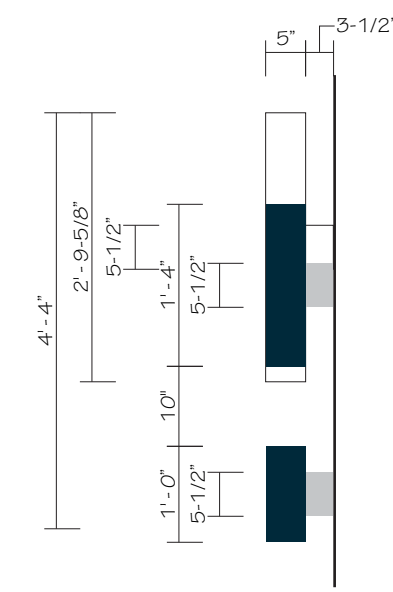


Front View
Scale: 3/8" = 1'-0"

Qty: 3 Sets
Locations S101, S102, & S108

Letters to be illuminated white at night.

Sign is 110.6 sqft



Side View
Scale: 1/2" = 1'-0"

NOTES

- ① 5" deep fabricated aluminum cabinet, with returns painted to match MP 03340 Gray Fog, 3/16" white acrylic face with white trim cap and translucent vinyl graphics to match PMS 303c, PMS 303c @ 40% and PMS 370. Cabinet to be illuminated with white LEDs. Cabinet to be raceway mounted, raceway to be painted Matthews Brushed Aluminum to match building.
- ② 5" deep fabricated aluminum channel letters, with retruns painted to match MP 03340 Gray Fog, 3/16" thick white acrylic faces, perforated vinyl on face to match PMS 303c, trimcap to match face. Letters to illuminate white. Letters to be illuminated with white LEDs. Letters to be raceway mounted, raceway to be painted Matthews Brushed Aluminum to match building.

General Contractor to provide (1) - 120v / 20 Amp dedicated circuit J-Box per letter set.

St. Vincent
Neighborhood Hospital
Noblesville, IN
(Promenade)

Date: 1/26/18

Revised: 4/2/18

Drawn by: JAD

Scale: See Drawing

File Name: Channel Letters

T>Tandem Hospitals>
Noblesville IN Promenade>
Shop Drawings> Exterior

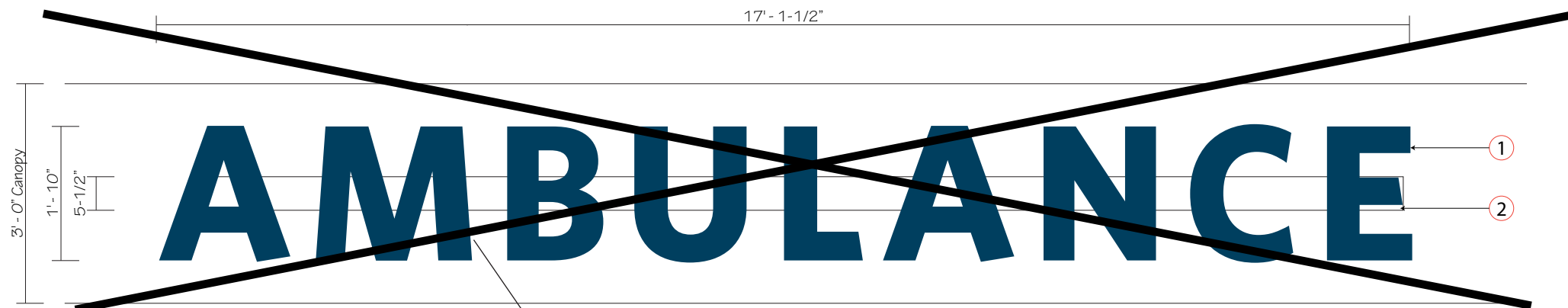
Project Manager: JAD

Approved:

Sign Type:
Illuminated Channel Letters
- Hospital Logo

signcraft USA
identifying your way
1301 Antioch Pike
Nashville, TN 37211
p. 615-885-2900
f. 615-885-2989

This design is being submitted for use as a product being manufactured for you by Signcraft, Inc. It is not to be reproduced, copied or manufactured by you or given to any other manufacturer without written permission from Signcraft, Inc. Unauthorized use is subject to design charge and will include any collection fees.



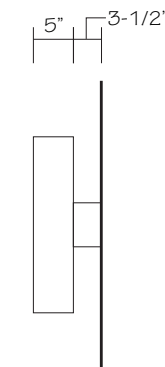
Front View

Scale: 1/2" = 1'-0"

Qty: 1 Set
Location S104

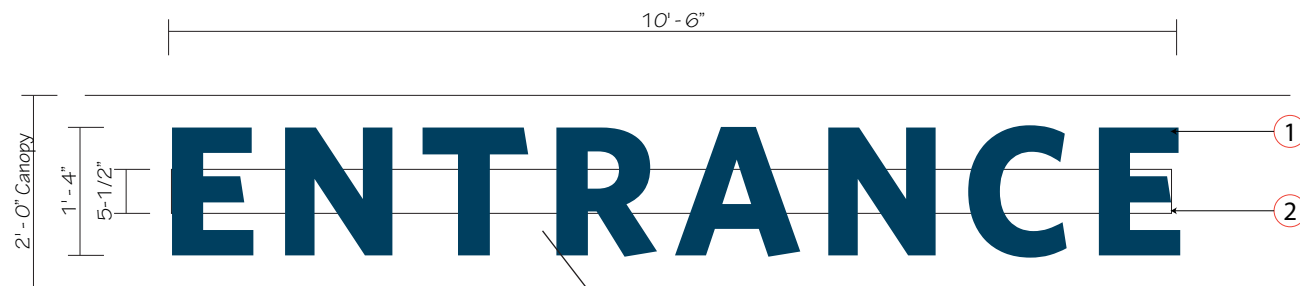
Letters to be illuminated white at night.

Sign is 31.5 sqft



Side View

Scale: 1/2" = 1'-0"



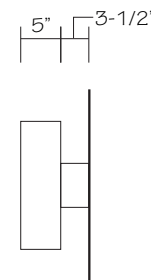
Front View

Scale: 1/2" = 1'-0"

Qty: 1 Set
Location S107
(will need variance for these locations)

Letters to be illuminated white at night.

Sign is 14 sqft



Side View

Scale: 1/2" = 1'-0"

NOTES

- 1 5" deep fabricated aluminum channel letters, with returns painted White 3/16" thick white acrylic faces with perforated vinyl to match PMS 303c applied first surface and trim cap to match returns. Letters to be illuminated with white LEDs.
- 2 Aluminum raceway to be painted Matthews White to match canopy

Font: Whitney Bold

General Contractor to provide (1) - 120v / 20 Amp dedicated circuit per letter set.

St. Vincent Neighborhood Hospital

Noblesville, IN
(Promenade)

Date: 1/26/18

Revised: 4/2/18

Drawn by: JAD

Scale: 1/2" = 1'-0"

File Name: Channel Letters

File Folder: T>Tandem Hospitals>
Noblesville IN Promenade>
Shop Drawings> Exterior

Project Manager: JAD

Approved:

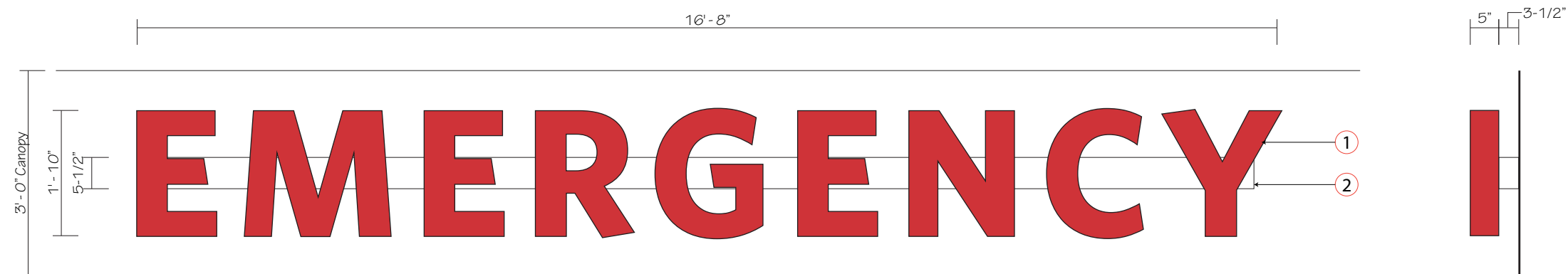
Sign Type:

Illuminated Channel Letters
- Entrance ID



1301 Antioch Pike
Nashville, TN 37211
p. 615-885-2900
f. 615-885-2989

This design is being submitted for use as a product being manufactured for you by Signcraft, Inc. It is not to be reproduced, copied or manufactured by you or given to any other manufacturer without written permission from Signcraft, Inc. Unauthorized use is subject to design charge and will include any collection fees.

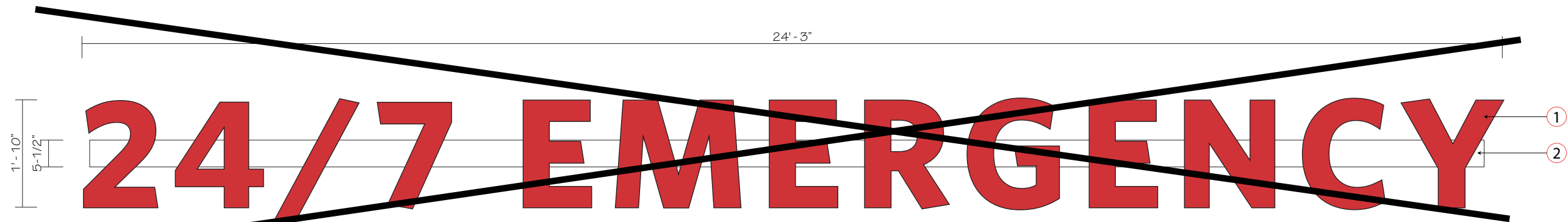


Front View
Scale: 1/2" = 1'-0"

Qty: 2 Sets
Location S109 & S110
(will need variance for these locations)

Sign is 30.5 sqft

Side View
Scale: 1/2" = 1'-0"



Front View
Scale: 1/2" = 1'-0"

Qty: 1 Set
Location S103

Sign is 44.5 sqft

NOTES

- ① 5" deep fabricated aluminum channel letters, with retruns painted to match PMS 200C. 3/16" thick white acrylic faces with translucent red vinyl to match PMS 200C with trim cap painted to match returns. Letters to be illuminated with white LEDs. Letters to be mounted directly to canopy and transformer to be placed remotely.
- ② Aluminum raceway to be painted Matthews White to match canopy

Font: Whitney Bold

General Contractor to provide (1) - 120v / 20 Amp dedicated circuit J-Box per letter set.

St. Vincent Neighborhood Hospital

Indianapolis, IN
(Allisonville Rd.)

Date: 1/26/18

Revised: 4/2/18

Drawn by: JAD

Scale: 1/2" = 1'-0"

File Name: Channel Letters

File Folder: T>Tandem Hospitals>
Noblesville IN Promenade>
Shop Drawings> Exterior

Project Manager: JAD

Approved:

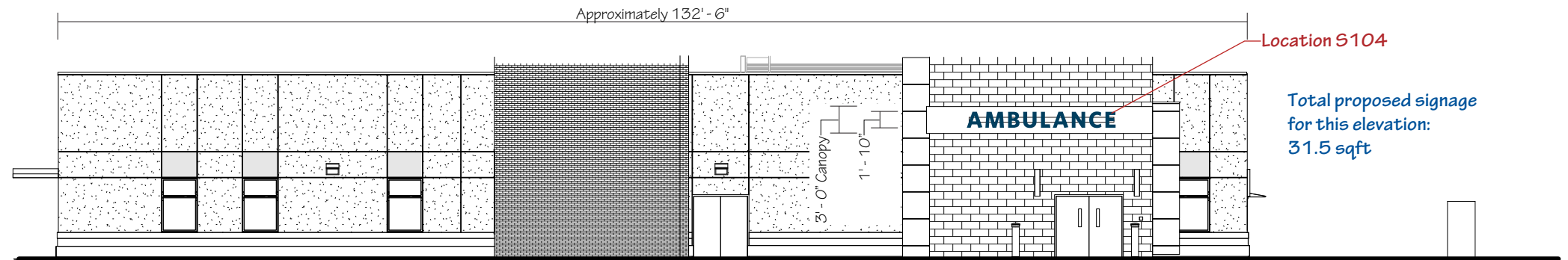
Sign Type:

Illuminated Channel Letters
- Entrance ID



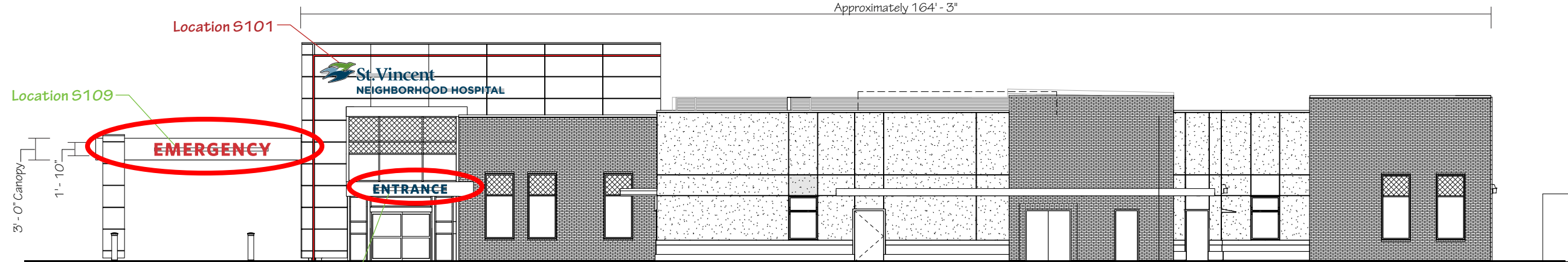
1301 Antioch Pike
Nashville, TN 37211
p. 615-885-2900
f. 615-885-2989

This design is being submitted for use as a product being manufactured for you by Signcraft, Inc. It is not to be reproduced, copied or manufactured by you or given to any other manufacturer without written permission from Signcraft, Inc. Unauthorized use is subject to design charge and will include any collection fees.



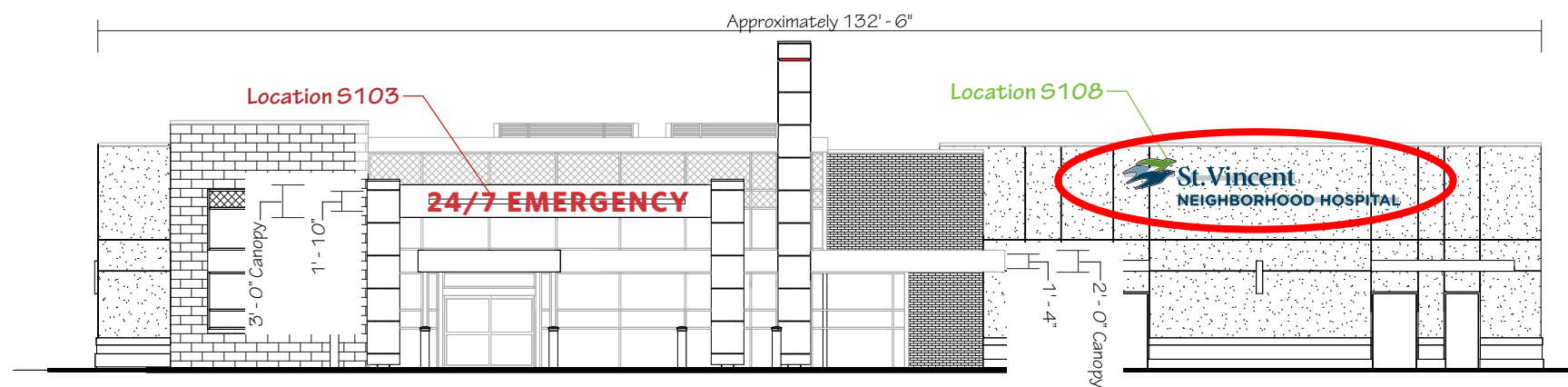
North Elevation

Scale: 1/16" = 1'-0"



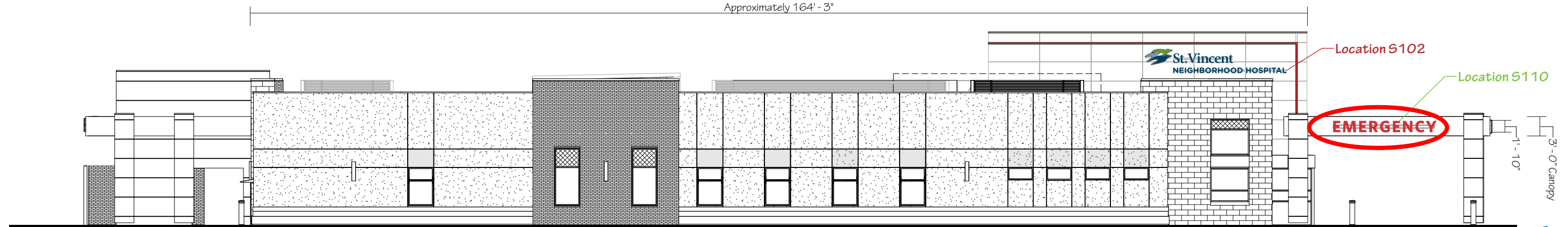
East Elevation

Scale: 1/16" = 1'-0"



South Elevation

Scale: 1/16" = 1'-0"



West Elevation

Scale: 1/16" = 1'-0"